

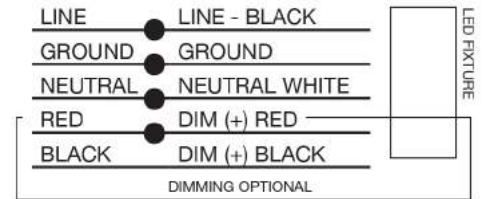


**PLEASE READ ALL INSTRUCTIONS CAREFULLY PRIOR TO INSTALLATION. REPLACE ANY CRACKED OR DAMAGED PROTECTIVE SHIELDS AND ITEMS. THIS FIXTURE MUST BE ASSEMBLED AND INSTALLED BY A QUALIFIED ELECTRICIAN.**

### Technical Data:

MODEL	RATED WATTAGE	PROTECTION
OSP-14-4K	Max. 99.48W	IP65
OSP-14-5K	Max. 99.5W	IP65

### Supply Wiring:

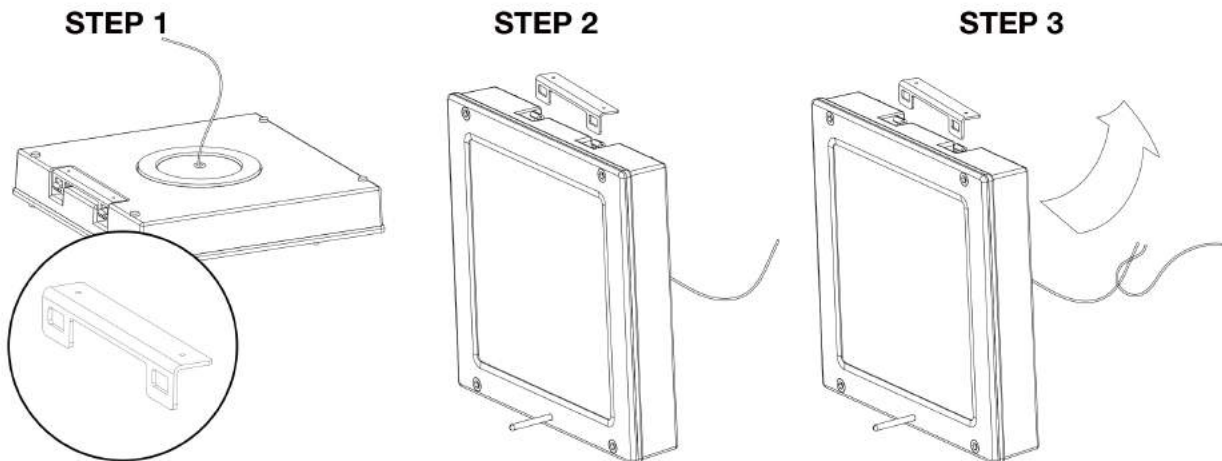


### Safety Instructions:

**READ AND FOLLOW ALL INSTRUCTIONS:** To reduce the risk of electrical shock, turn off the power supply prior to installation or servicing. The luminaire must be installed in accordance with the National Electrical Code (NEC) or your local electrical code. If you are unfamiliar with codes and requirements, consult a qualified electrician. Check to make sure that all the input power connections have been properly made and the module is grounded to avoid potential electrical shock. **DO NOT LIFT LUMINAIRE BY ITS POWER LEADS. PLEASE SAVE THESE INSTRUCTIONS FOR FUTURE REFERENCE.**

\* Please note that all mounting hardware and accessories are not included.

### Installation:



**STEP 1** First find the mounting bracket and install and screw it securely on top of ceiling enough to hold the weight of the fixture. Please align accordingly. Use 3/4" strain relief to connect the wire cord to the fixture (supplied by others). Once mounting bracket is installed, place the canopy fixture into the holes of the bracket so that it may be hung.

**STEP 2** Once hung, make the following electrical connections:

- Connect the black fixture lead to the voltage supply position of the terminal block or Hot Wire. (For 120/277V wiring.)
- Connect the white fixture lead to the neutral supply position of the terminal block or wire. (For 120/277V wiring.)
- Connect the green or green/yellow ground lead to the green wire position of the terminal block.
- If 0 to 10V dimming is an option, connect the red dimming positive lead to the supply dimming positive lead.
- If 0 to 10V dimming is an option, connect the black dimming negative lead to the supply dimming negative lead.

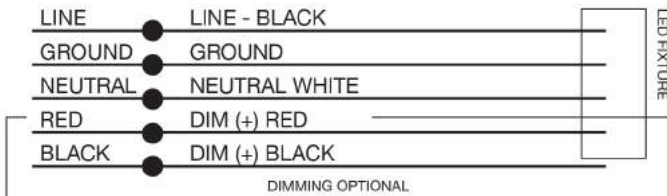
**STEP 3** Once wiring is complete, bring canopy fixture into the ceiling and screw four mounting screws (we suggest tap-con concrete screws), one in each corner of canopy from the screw openings. Tighten mounting screws on each corner as securely as possible.

# OSPREY LED Installation Instructions

## Installation (Continued):

**PLEASE READ ALL INSTRUCTIONS CAREFULLY PRIOR TO INSTALLATION. REPLACE ANY CRACKED OR DAMAGED PROTECTIVE SHIELDS AND ITEMS. THIS FIXTURE MUST BE ASSEMBLED AND INSTALLED BY A QUALIFIED ELECTRICIAN.**

## Supply Wiring FIGURE 1:

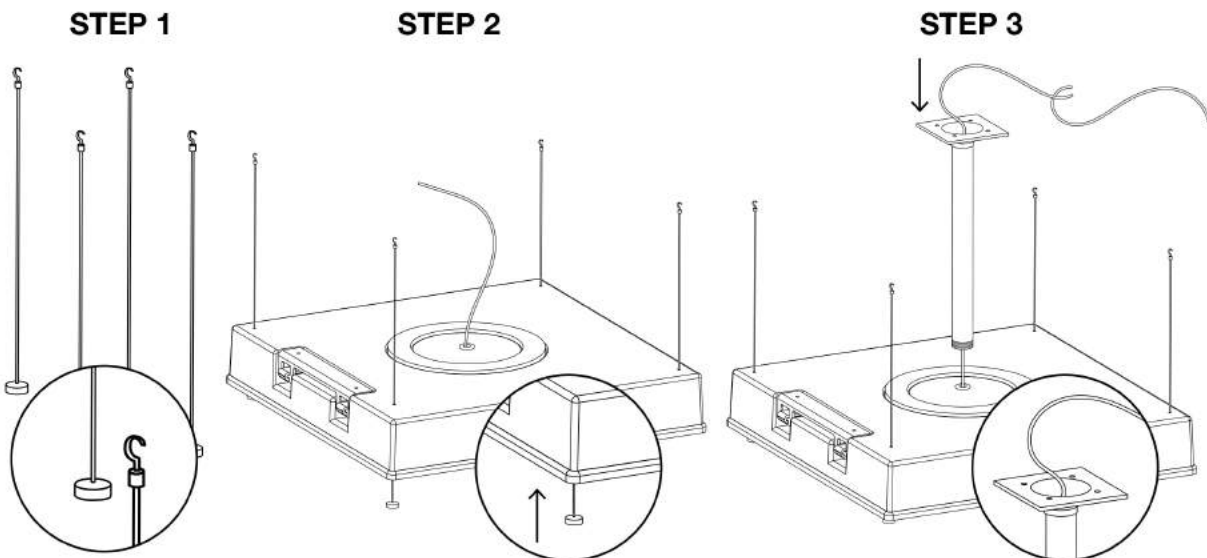


## Safety Instructions:

**READ AND FOLLOW ALL INSTRUCTIONS:** To reduce the risk of electrical shock, turn off the power supply prior to installation or servicing. The luminaire must be installed in accordance with the National Electrical Code (NEC) or your local electrical code. If you are unfamiliar with codes and requirements, consult a qualified electrician. Check to make sure that all the input power connections have been properly made and the module is grounded to avoid potential electrical shock. **DO NOT LIFT LUMINAIRE BY ITS POWER LEADS. PLEASE SAVE THESE INSTRUCTIONS FOR FUTURE REFERENCE.**

\* Please note that all mounting hardware and accessories are not included.

## Installation:



**STEP 1** Insert cable/chains into the 4 corner holes of the canopy until locked. (Recommend using a galvanized steel cable with a stopper at the end.)

**STEP 2** Mount the 4 cables onto the ceiling until secure.

**STEP 3** Mount the pendant to the already existing J-Box (supplied by others) with included mounting screws and make wire connections. Feed fixture cord through pendant.

**Connect wires as outlined below (Refer to Figure 1 above)**

- Connect the black fixture lead to the voltage supply position of the terminal block or Hot Wire. (For 120/277V wiring.)
- Connect the white fixture lead to the neutral supply position of the terminal block or wire. (For 120/277V wiring.)
- Connect the green or green/yellow ground lead to the green wire position of the terminal block.
- If 0 to 10V dimming is an option, connect the red dimming positive lead to the supply dimming positive lead.
- If 0 to 10V dimming is an option, connect the black dimming negative lead to the supply dimming negative lead.