

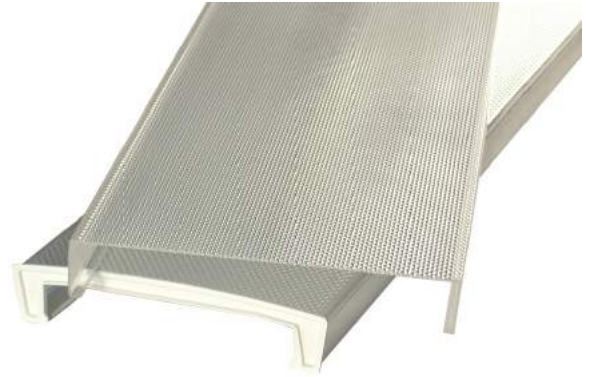


Short Specification:

Are your lighting diffusers yellow? Broken? Unsalvageable? Replace them with custom Wrap-A-Round diffusers! Our custom division has the capability to fabricate nearly any shape imaginable from special brands to custom extrusions. From one piece to a thousand, Louvers International can create Custom Wrap-A-Rounds using our custom Para Image Parabolic Louvers.

Features:

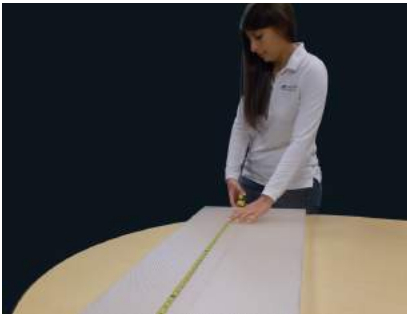
- Encloses existing fixtures
- Replaces damaged lenses
- Over 3,000 shapes available
- Offered in clear prismatic or white



Measuring Instructions:

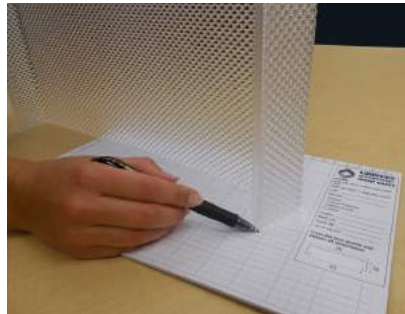
1. Measure Overall Length

Precisely measure from end to end along the edge.



2. Measure End View

Precisely measure/trace the end view of the lens. Make sure the lens is not distorted.



3. Trace End Cap

Precisely trace the end cap of the old lens as accurately as possible.



Ordering Information:

ORDERING PROCEDURE:

Remove your old diffuser and record the following information. Then, call Louvers International to place your order.

- A. **REMOVE OLD DIFFUSER** - Carefully remove diffuser for measuring.
- B. **OVERALL LENGTH** - Measure from end to end along the edge.
- C. **TRACE END VIEW** - As accurately as possible.
- D. **TRACE END CAP** - As accurately as possible (if end cap is present, please include photos of the end cap with your order.)
- E. **SEND ORDER** - Include QUANTITY, PART #, LENGTH MEASURE and YOUR ILLUSTRATIONS WITH THE TRACED END VIEW AND END CAP VIEW. (If possible, send the old end caps along with your order.)
- F. **SPECIAL NOTE** - Be sure your illustrations are as accurate as possible, as we will produce your order to match it.

Ordering Checklist:

- A. REMOVE OLD DIFFUSER
- B. OVERALL LENGTH - _____
- C. END VIEW TRACED? - _____
- D. END CAP TRACED OR INCLUDED? - _____
- E. PART # - _____
- F. QUANTITY - _____
- G. SEND ORDER

PLEASE NOTE: IF FAXING YOUR ORDER IN, PLEASE SPECIFY ACTUAL DIMENSIONS ON THE TRACED DRAWING.

