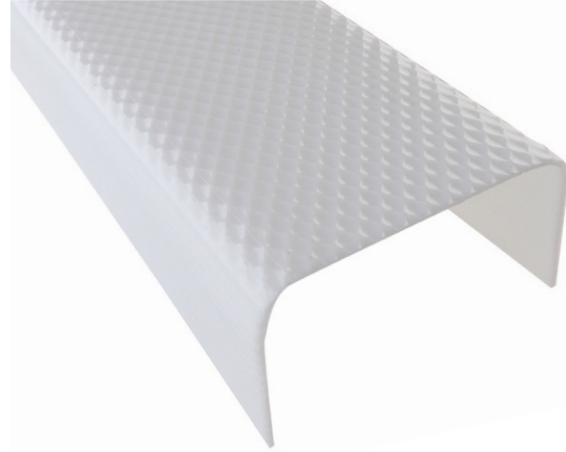




Short Specification:

The Clip Strip provides an economical and easy solution to many undesirable lighting solutions. The Clip Strip clips securely on to the fluorescent bulbs and converts unsightly bare lamps into a fixture with a clear or white lens wrap. Available in a 2' or 4' length as well as limited availability in 8' length, for T8 or T12 bulbs and for one or two-bulb fixtures. The Clip Strip is also available with end caps for that complete and finished look. Please specify T12 or T8 bulb size when ordering. Contact your Louvers International sales representative today to start your order.

*For custom width contact Louvers Sales rep.



Special Order (Please call for pricing & availability)

PART NUMBER		DESCRIPTION
LI-CS-1185-C4	2¾" wide	One Bulb, Clear Prismatic Clip Strip
LI-CS-1185-4W		One Bulb, White Clip Strip
LI-CS-612-4C	5¾" wide	Two Bulb, Clear Prismatic Clip Strip
LI-CS-612-4W		Two Bulb, White Clip Strip

2FT or 4 FT

PART NUMBER		DESCRIPTION
LI-CSEC-1C	2¾" wide	To Fit One Bulb - Clear Prismatic Clip Strip with End Caps
LI-CSEC-1W		To Fit One Bulb - White Clip Strip with End Caps
LI-CSEC-2C	5¾" wide	To Fit Two Bulbs - Clear Prismatic Clip Strip with End Caps
LI-CSEC-2W		To Fit Two Bulbs - White Clip Strip with End Caps

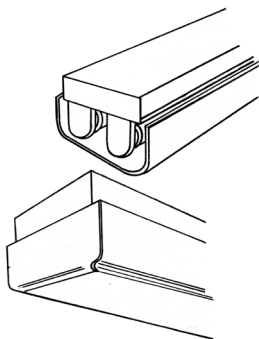
2FT or 4 FT

Materials Available:

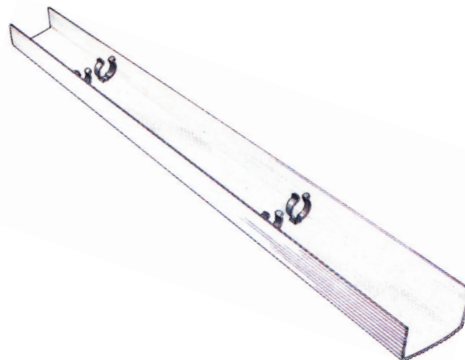
- LI21AW .080 or .125
- Clear Prismatic .125
- Prismatic White .125 (textured outside)

PLEASE SPECIFY FOR ALL ORDERS:

- T12 or T8
- One Bulb or Two Bulbs
- Length & Depth



Clip Strip End Caps



Clips



Two Bulb Clip Strip